

2229-17

T6S, R68W, Sec. 17

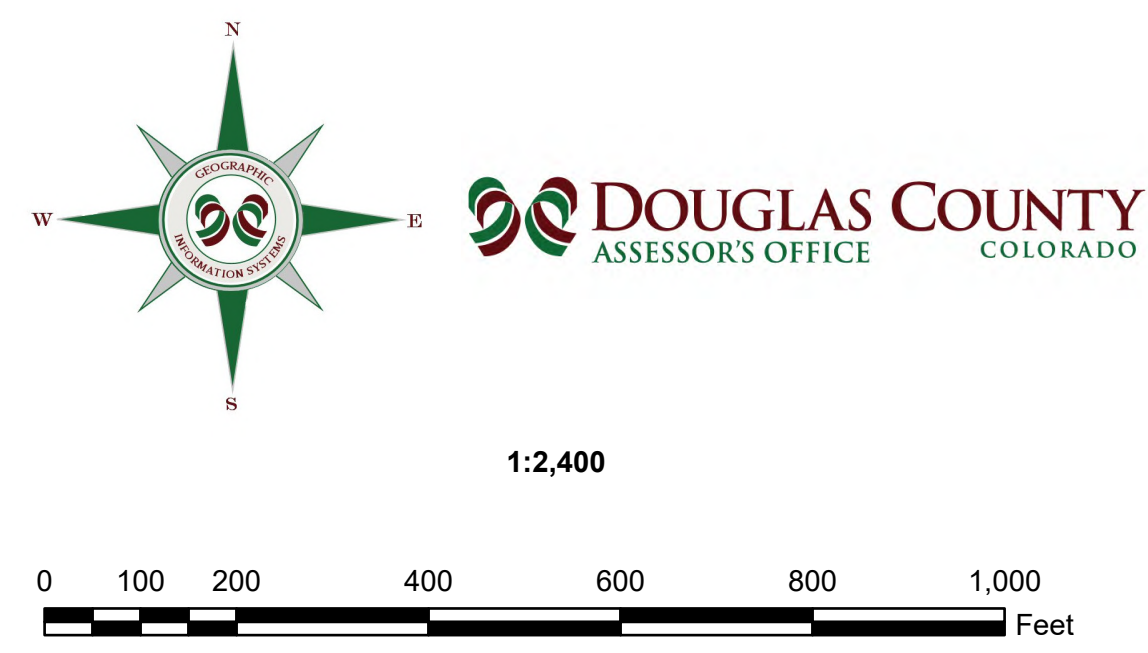
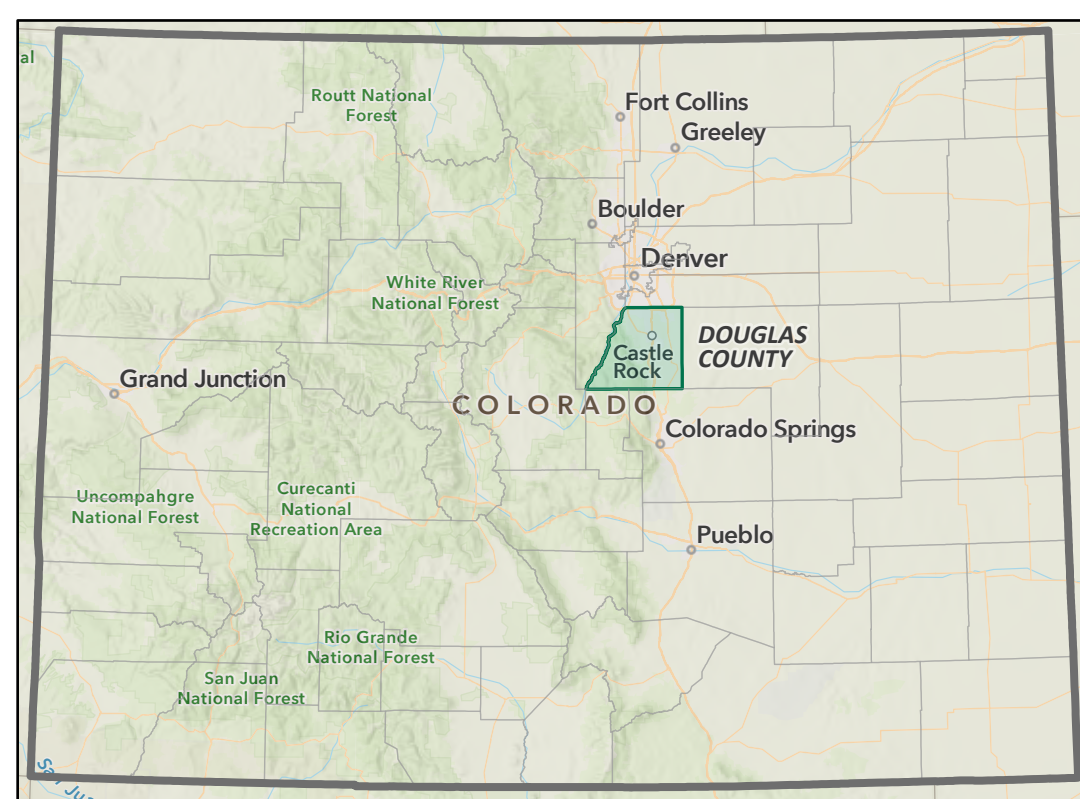
- Legend**
- Approx. Section / Quarter Section
 - Subdivision
 - Tax District
 - Right of Way
 - Parcel
 - Actual Tax District
 - Conservation Easement
 - ROW Boundary
 - Historical Boundary

TOWNSHIP INDEX

2227	2231	2233	17S			
2357	2353	2351	2349	17S		
2499	2501	2503	2505	2507	18S	
2613	2611	2609	2607	2605	19S	
2763	2765	2767	2769	2771	2773	19S
R67W	R68W	R69W	R70W	R71W	R72W	R73W

SECTION INDEX

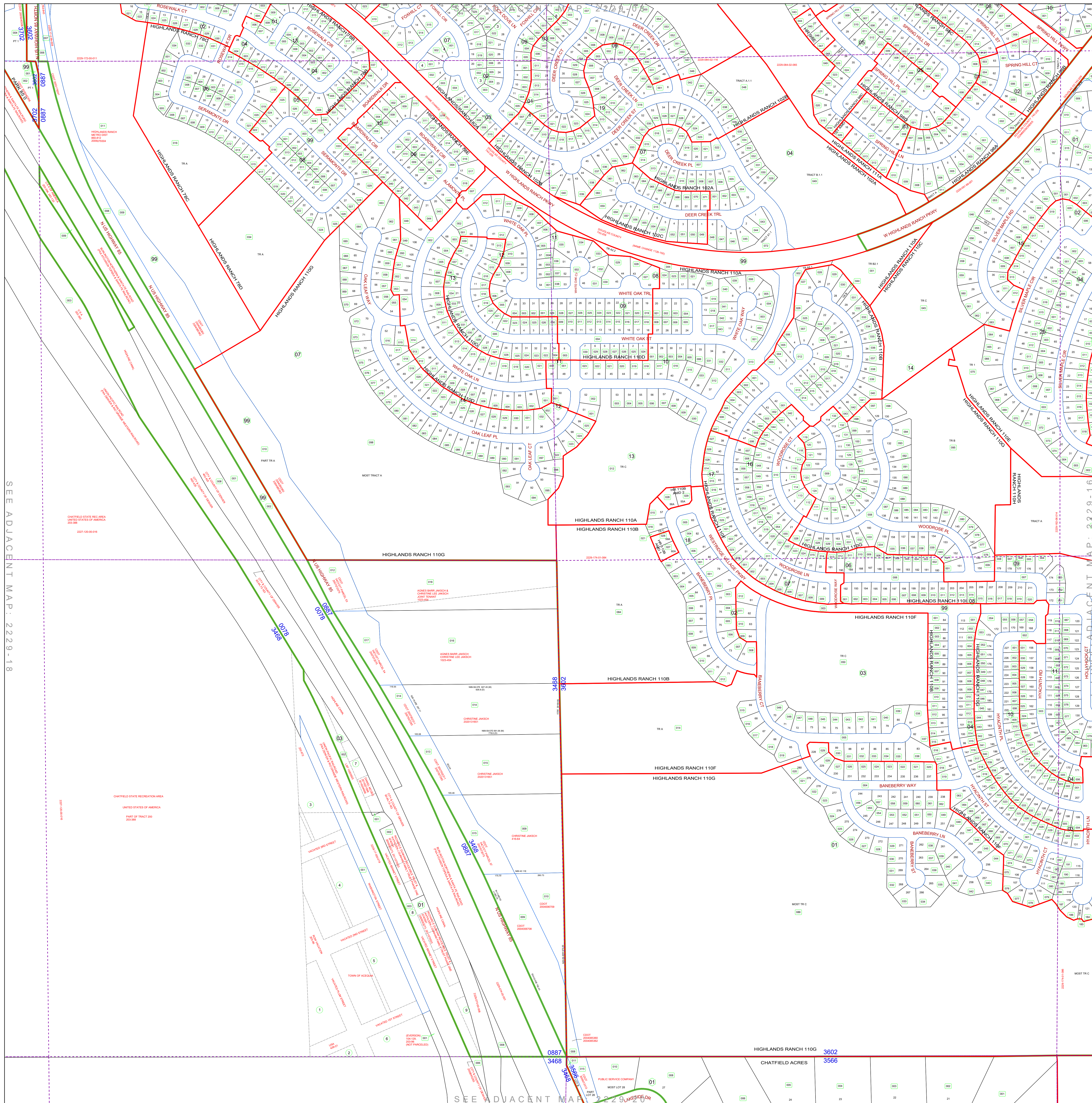
6	5	4	3	2	1
7	8	9	10	11	12
18	16	15	14	13	
19	20	21	22	23	24
30	29	28	27	26	25
31	32	33	34	35	36



Caution

This map is for assessment purposes only. Do not use this map for legal conveyance. This map is not accurate by surveying standards. This map does not comply with National Mapping Accuracy Standards.

Disclaimer: All data and information ("Products") contained herein are for informational purposes only. Although our Products are believed to be accurate at the time of printing, Douglas County does not warrant that such products are error-free. Douglas County reserves the right to modify or update our Products at any time without notice. For a particular purpose, Douglas County shall not be liable for any direct, indirect, incidental, or consequential damages arising out of or in connection with the use of our Products. The user acknowledges and agrees that the use of such Products is at the user's sole risk.



Printed on: 4/10/2024

2229-17
T6S, R68W, Sec. 17