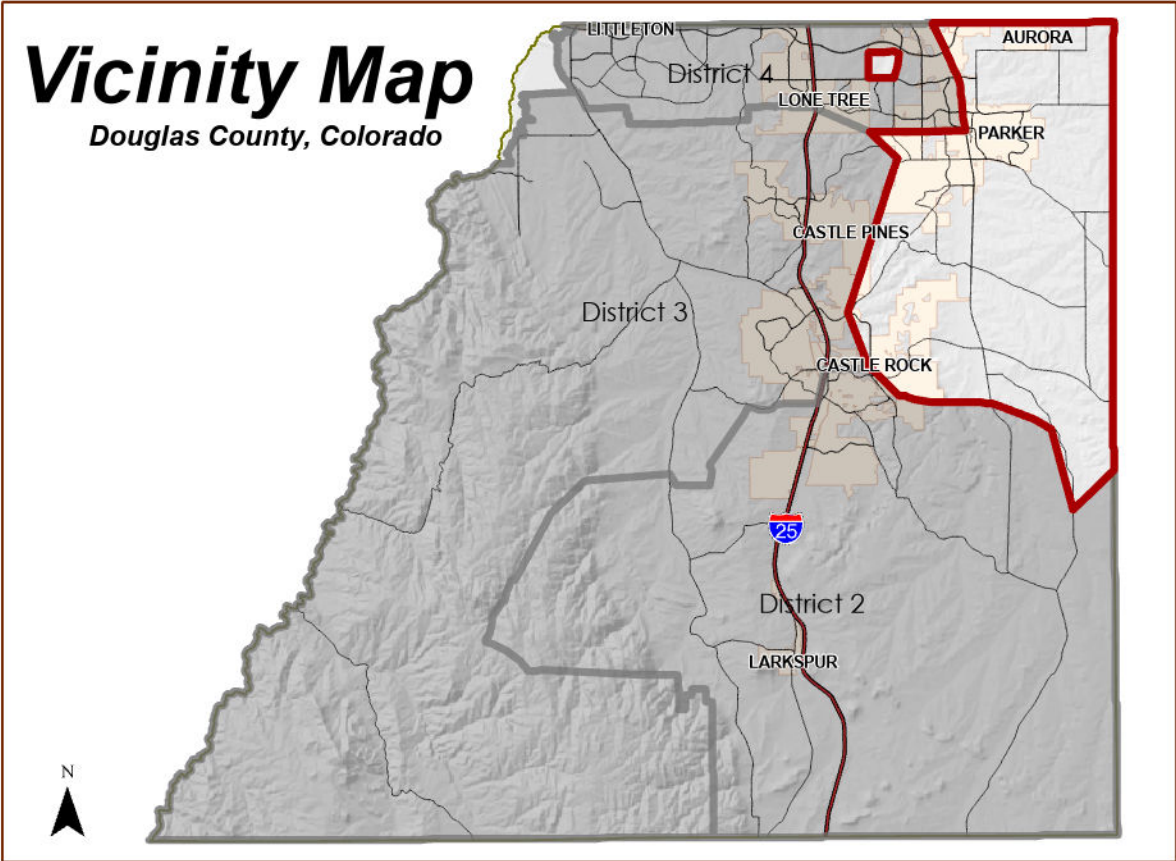


Public Works Operations District 1 Billie Brewer

Douglas County, Colorado

- RAP
 - Gravel Roads
- Roads
- Interstate
 - US Highway
 - State Highway
 - Toll Highway
 - Major Road
 - Local Road
 - Private
 - Platted Not Built
 - Gated Community
 - Access Easement
 - Entrance/Exit Ramp

- County Boundary
- Municipalities
- Parks
- Lakes
- Intermittent Lakes
- Streams



Douglas County Public Works Operations Department: GIS Disclaimer - All GIS data and information products provided by the Douglas County Public Works Department are for illustrative purposes only. While products are considered to be accurate when provided, Douglas County does not warrant that they are error free. Douglas County Public Works Department shall not be liable for direct, indirect, incidental, or consequential damages arising from the use of such products. The recipient, and/or user, acknowledges and agrees that the use of such products is at their sole risk. Questions concerning this or any other product provided by Douglas County Public Works Department, including errors, corrections and/or updates should be directed to:

Douglas County Public Works Operations
3030 N Industrial Way, Castle Rock, CO 80109
(303) 660-7480
pwoperations@douglas.co.us