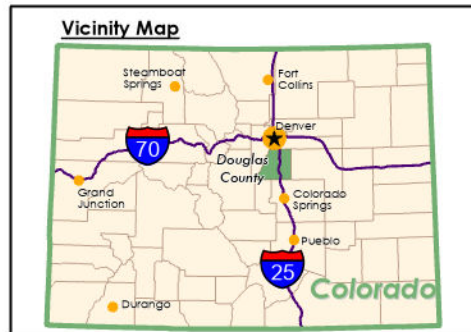


# As Built

## 2018 Contract Maintenance Projects

### Douglas County, Colorado

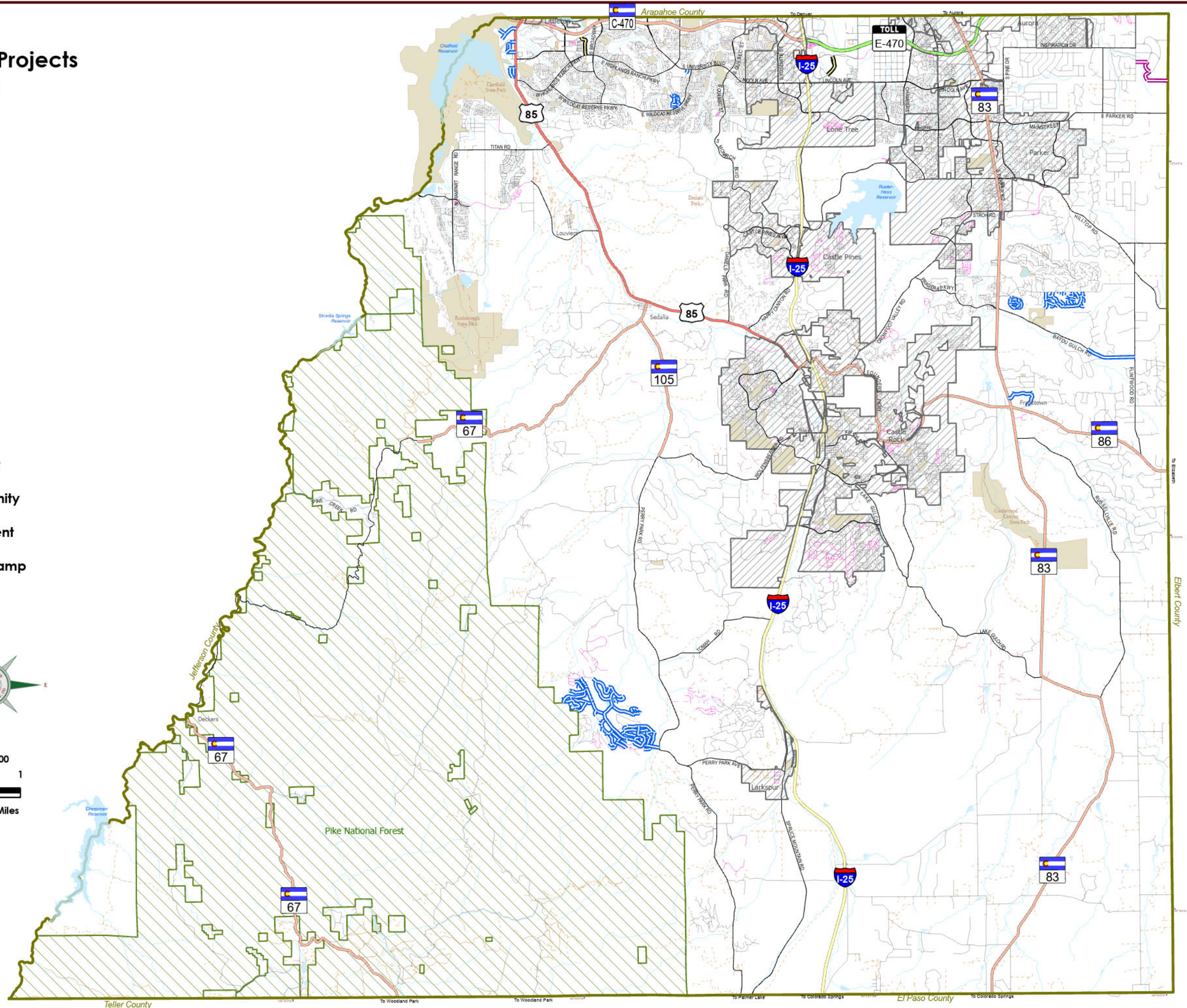
- |  |                      |   |                    |
|--|----------------------|---|--------------------|
|  | HMA Overlay          |    | Interstate         |
|  | Asphalt Full Depth   |    | US Highway         |
|  | Concrete             |    | State Highway      |
|  | County Boundary      |    | Toll Highway       |
|  | Municipalities       |    | Major Road         |
|  | Parks                |    | Local Road         |
|  | Pike National Forest |    | Private            |
|  | Lakes                |    | Forest Road        |
|  | Intermittent Lakes   |    | Platted Not Built  |
|  | Streams              |    | Gated Community    |
|  |                      |   | Access Easement    |
|  |                      |  | Entrance/Exit Ramp |



**Douglas County Public Works Department: GIS Disclaimer**

All GIS data and information products provided by the Douglas County Public Works Department are for illustrative purposes only. While products are considered to be accurate when provided, Douglas County does not warrant that they are error free. Douglas County Public Works Department shall not be liable for direct, indirect, incidental, or consequential damages arising from the use of such products. The recipient, and/or user, acknowledges and agrees that the use of such products is at their sole risk. Questions concerning this or any other product provided by Douglas County Public Works Department, including errors, corrections and/or updates should be directed to:

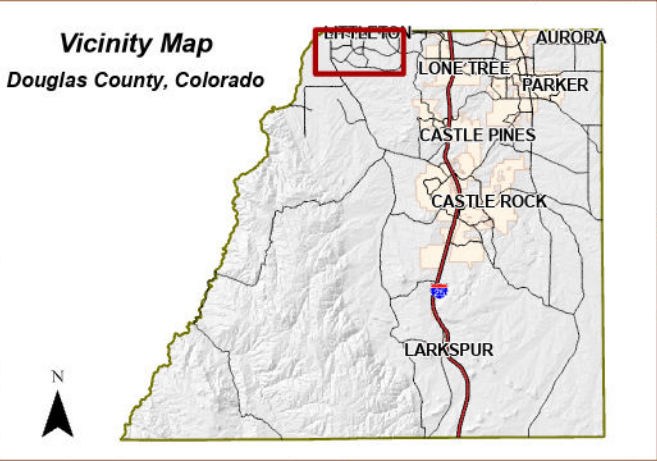
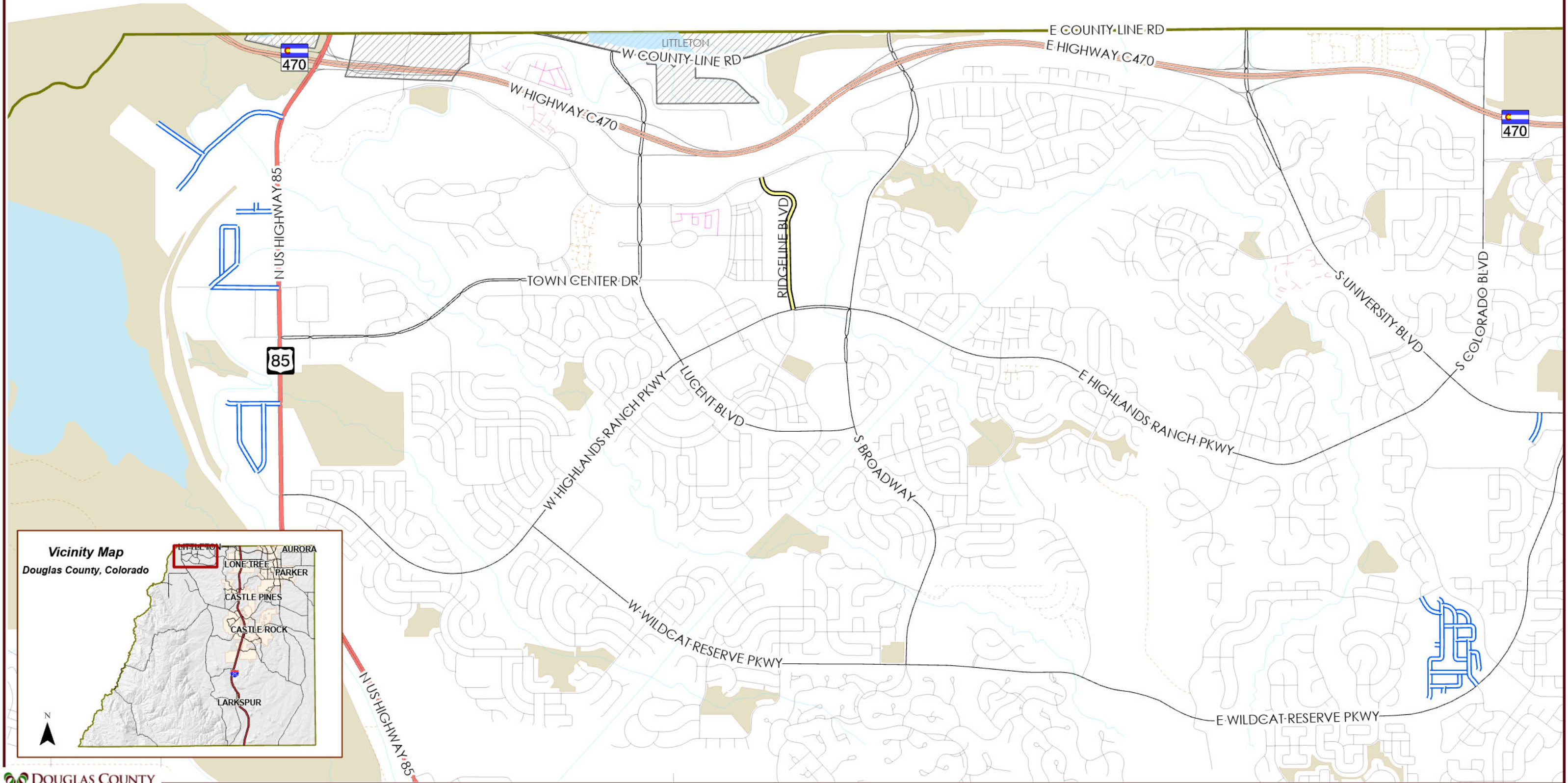
Douglas County Public Works Engineering  
100 Third St, Castle Rock, CO, 80104  
(303) 660-7490  
Engineering@douglas.co.us





**As Built**  
**2018 Contract Maintenance Projects**  
Douglas County, Colorado

- |   |                 |   |               |   |                 |   |                    |
|---|-----------------|---|---------------|---|-----------------|---|--------------------|
|  | HMA Overlay     |  | Lakes         |  | Major Road      |  | Access Easement    |
|  | Concrete        |  | Streams       |  | Local Road      |  | Entrance/Exit Ramp |
|  | County Boundary | <b>Roads</b>  |               |  | Private         |  | Platted Not Built  |
|  | Municipalities  |  | US Highway    |  | Gated Community |   |                    |
|  | Parks           |  | State Highway |   |                 |   |                    |





**As Built**  
**2018 Contract Maintenance Projects**  
Douglas County, Colorado

Concrete

County Boundary

Municipalities

Parks

Streams

Roads

Interstate

State Highway

Toll Highway

Major Road

Local Road

Private

Platted Not Built

Gated Community

Access Easement

Entrance/Exit Ramp

1:25,000  
500 0 500  
US Feet

The main map displays the road network and project locations in Douglas County, Colorado. Key features include: 

- Roads:** Interstate 25 (yellow), State Highway E-470 (orange), and Toll Highway E-470 (green). Other roads shown include S Quebec St, S Yosemite St, E Highway C470, Meridian Blvd, E Lincoln Ave, Speoria St, Ridgegate Pkwy, E Mainstreet, S Havana St, S Chambers Rd, and S Jordan Rd.
- Municipalities:** Lone Tree, Parker, Castle Pines, Castle Rock, and Larkspur are labeled.
- Project Locations:** Indicated by pink dashed lines and labels such as 'Platted Not Built' and 'Gated Community'.
- Other Features:** Concrete roads are shown as thick yellow lines. County boundaries are outlined in yellow. Parks are shaded in light brown. Streams are shown as blue lines.

**Vicinity Map**  
Douglas County, Colorado

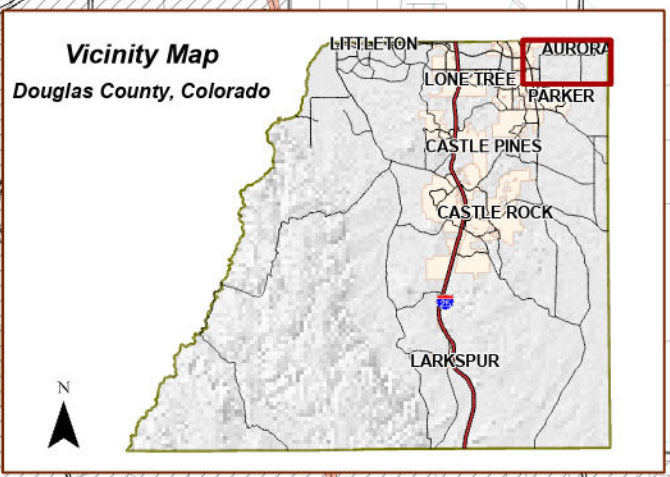
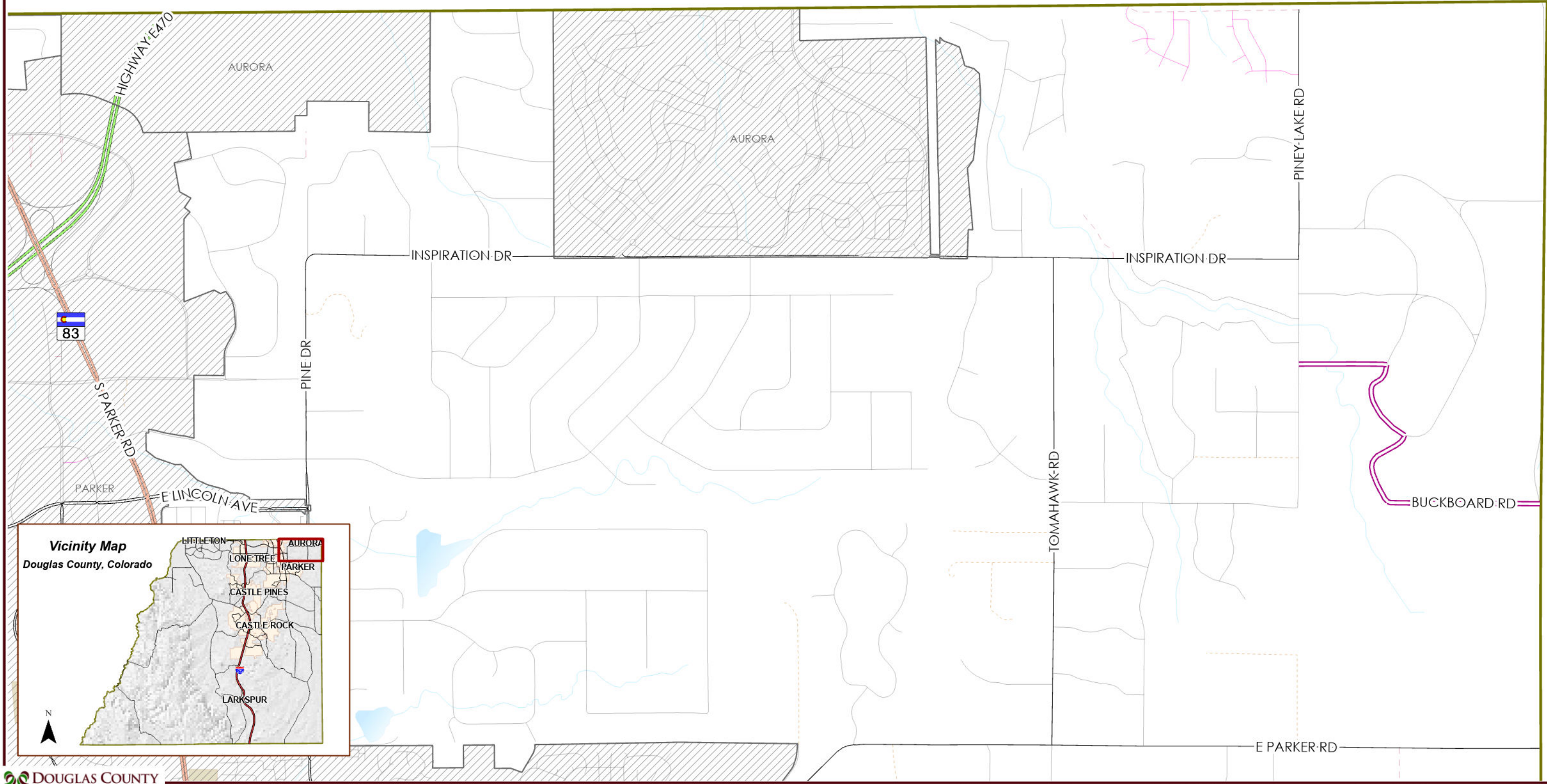
This map shows the location of the project area within Douglas County, Colorado. It highlights the project area in red and shows surrounding municipalities including Littleton, Aurora, Parker, Castle Pines, Castle Rock, and Larkspur.

O:\PW\PW\Pavement\lanagement\Pavement\lanagement Pro Project 2017\_2022 Overlay Data\Pavement\lanagement Pro Project 2017\_2022 Overlay Data.aprx Print Date: 11/19/2022 8:30 AM



**As Built**  
**2018 Contract Maintenance Projects**  
Douglas County, Colorado

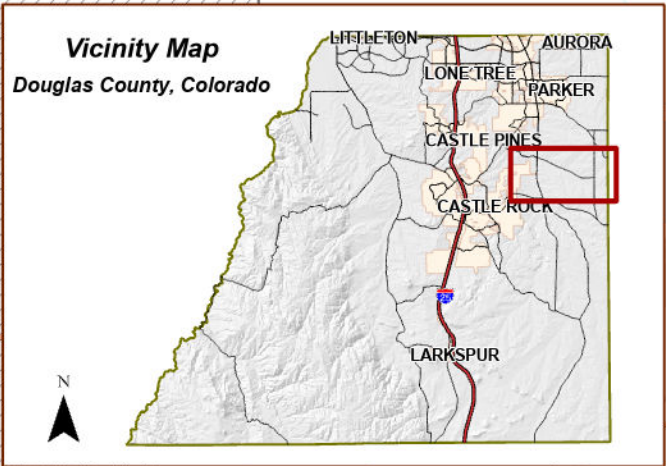
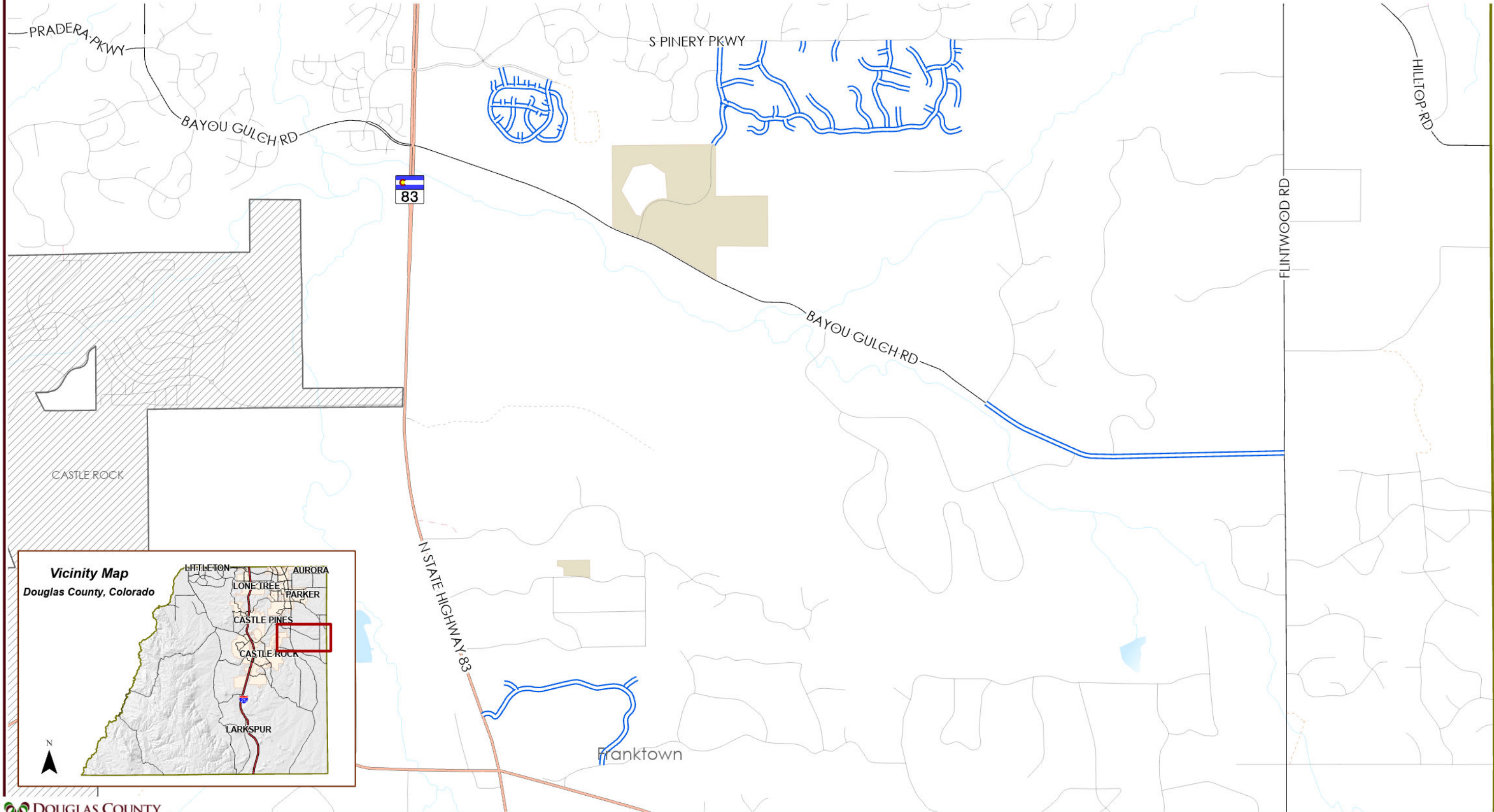
- |   |                    |   |               |   |                 |   |                    |
|---|--------------------|---|---------------|---|-----------------|---|--------------------|
|  | Asphalt Full Depth |  | Streams       |  | Major Road      |  | Access Easement    |
|  | County Boundary    |  | <u>Roads</u>  |  | Local Road      |  | Entrance/Exit Ramp |
|  | Municipalities     |  | State Highway |  | Private         |  | Platted Not Built  |
|  | Parks              |  | Toll Highway  |  | Gated Community |   |                    |
|  | Intermittent Lakes |   |               |   |                 |   |                    |





**As Built**  
**2018 Contract Maintenance Projects**  
Douglas County, Colorado

- |   |                 |   |                    |   |                   |
|---|-----------------|---|--------------------|---|-------------------|
|  | HMA Overlay     |   | Intermittent Lakes |  | Local Road        |
|  | County Boundary |  | Streams            |  | Private           |
|  | Municipalities  | <b>Roads</b>  |                    |  | Platted Not Built |
|  | Parks           |  | State Highway      |  | Gated Community   |
|  | Lakes           |  | Major Road         |  | Access Easement   |





**As Built**  
**2018 Contract Maintenance Projects**  
Douglas County, Colorado

- HMA Overlay

County Boundary

Pike National Forest

Lakes

Streams

Roads

Major Road

Local Road

Private

Platted Not Built

Gated Community

Access Easement

1:25,000  
500 0 500  
US Feet

**Vicinity Map**  
Douglas County, Colorado

O:\PW\PW\Pavement Management\Pavement Management Pro Project 2017\_2022 Overlay Data\Pavement Management Pro Project 2017\_2022 Overlay Data.aprx Print Date: 11/19/2022 8:20 AM