

SENATE DISTRICTS

Douglas County, Colorado

Passed and Adopted: January 18, 2022

Effective January 31, 2022

-BOCC Resolution No. R-022-005

Merlin Klotz, Clerk and Recorder

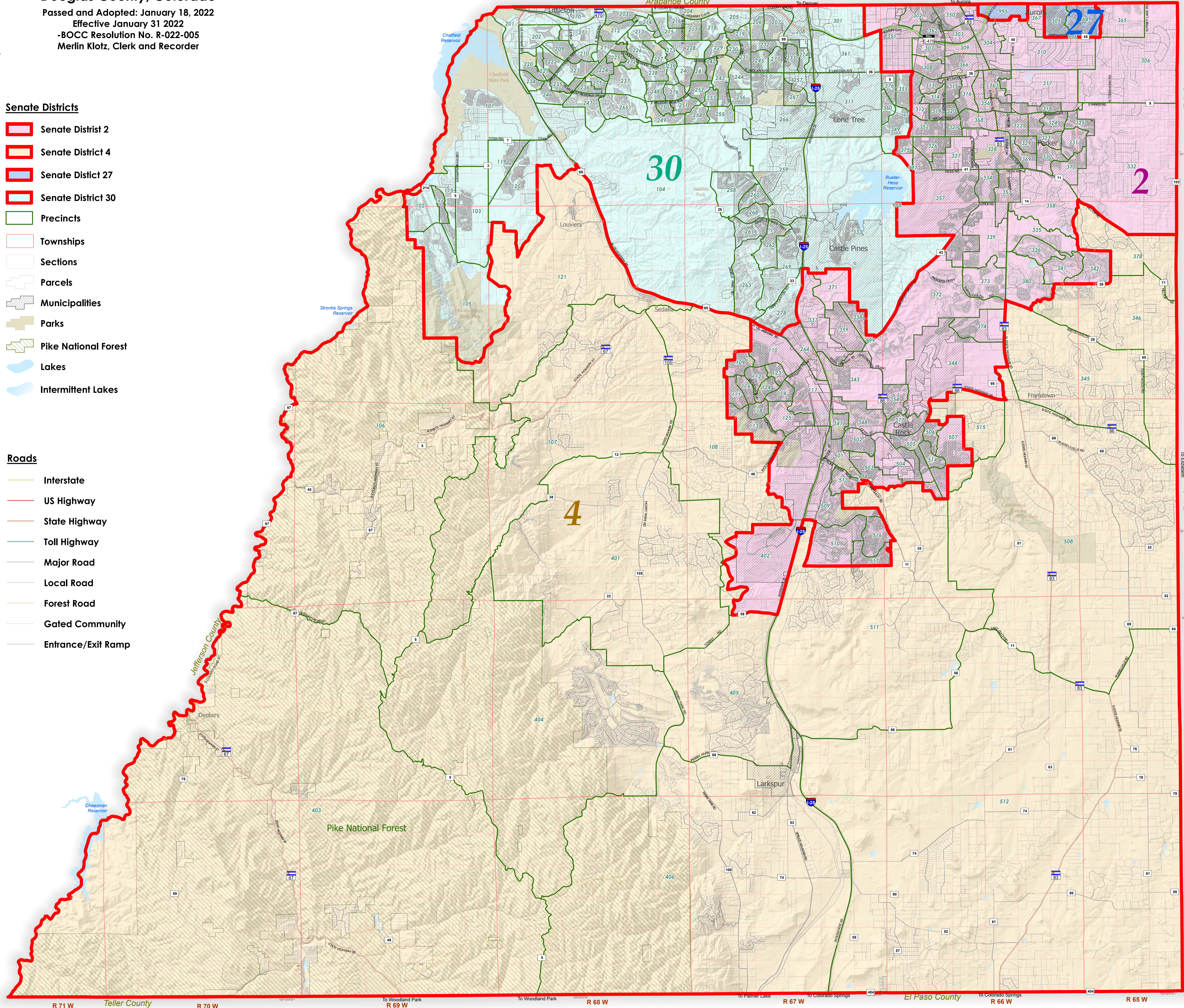
Precinct Information	Precinct Number	State Precinct Number	Congressional District	State House District
	101	430918101	4	30
	102	430918102	4	30
	103	430918103	4	30
	104	430918104	4	30
	105	430918105	4	30
	106	404918106	4	39
	107	404918107	4	39
	108	404918108	4	45
	109	402418109	4	24
	110	402418110	4	24
	111	402418111	4	24
	112	402418112	4	24
	113	402418113	4	24
	114	402418114	4	24
	115	402418115	4	24
	116	402418116	4	24
	117	402418117	4	24
	118	402418118	4	24
	119	430918119	4	39
	120	430918120	4	39
	121	404918121	4	39
	122	404918122	4	39
	123	402418123	4	24
	124	402418124	4	24
	125	402418125	4	24
	126	402418126	4	24
	127	402418127	4	24
	128	402418128	4	24
	129	402418129	4	24
	130	402418130	4	24
	131	402418131	4	24
	132	402418132	4	24
	133	402418133	4	24
	134	402418134	4	24
	135	402418135	4	24
	136	402418136	4	24
	137	402418137	4	24
	138	402418138	4	24
	139	402418139	4	24
	140	402418140	4	24
	141	402418141	4	24
	142	402418142	4	24
	143	402418143	4	24
	144	402418144	4	24
	145	402418145	4	24
	146	402418146	4	24
	147	402418147	4	24
	148	402418148	4	24
	149	402418149	4	24
	150	402418150	4	24
	151	402418151	4	24
	152	402418152	4	24
	153	402418153	4	24
	154	402418154	4	24
	155	402418155	4	24
	156	402418156	4	24
	157	402418157	4	24
	158	402418158	4	24
	159	402418159	4	24
	160	404918160	4	39
	161	404918161	4	39
	162	402418162	4	24
	163	402418163	4	24
	164	402418164	4	24
	165	402418165	4	24
	166	402418166	4	24
	167	402418167	4	24
	168	402418168	4	24
	169	402418169	4	24
	170	402418170	4	24
	171	402418171	4	24
	172	402418172	4	24
	173	402418173	4	24
	174	402418174	4	24
	175	402418175	4	24
	176	402418176	4	24
	177	402418177	4	24
	178	402418178	4	24
	179	402418179	4	24
	180	402418180	4	24
	181	402418181	4	24
	182	402418182	4	24
	183	402418183	4	24
	184	402418184	4	24
	185	402418185	4	24
	186	402418186	4	24
	187	402418187	4	24
	188	402418188	4	24
	189	402418189	4	24
	190	402418190	4	24
	191	402418191	4	24
	192	402418192	4	24
	193	402418193	4	24
	194	402418194	4	24
	195	402418195	4	24
	196	402418196	4	24
	197	402418197	4	24
	198	402418198	4	24
	199	402418199	4	24
	200	402418200	4	24

Senate Districts

- Senate District 2
- Senate District 4
- Senate District 27
- Senate District 30
- Precincts
- Townships
- Sections
- Parcels
- Municipalities
- Parks
- Pike National Forest
- Lakes
- Intermittent Lakes

Roads

- Interstate
- US Highway
- State Highway
- Toll Highway
- Major Road
- Local Road
- Forest Road
- Gated Community
- Entrance/Exit Ramp



DISCLAIMER:
 All data and information ("Products") contained herein are for informational purposes only. Although such Products are believed to be accurate at the time of printing, Douglas County does not warrant that such Products are error free. Douglas County provides these Products on an "as is" basis without warranties of any kind, either express or implied, including, but not limited to, warranties of title or implied warranties of merchantability or fitness for a particular purpose. Douglas County shall not be liable for any direct, indirect, incidental, special or consequential damages arising out of the use of such Products, or the inability to use such Products or out of any breach of any warranty. The user acknowledges and agrees that the use of such Products is at the sole risk of the user.

General questions about this or any other Douglas County GIS products, including errors, omissions, corrections and/or updates should be directed to the Douglas County GIS Services at (303) 660-7416.

Douglas County GIS Services
 Wilcox Bldg. 301 Wilcox St
 Castle Rock, Colorado 80104

